



# Report to the Community

---

## Cruise Industry

September 2, 2010

**PORTCHARLESTON**

A presentation of the South Carolina State Ports Authority



**PORTCHARLESTON**

A presentation of the South Carolina State Ports Authority



# Economic Impact:

---

\$37 million in 2010



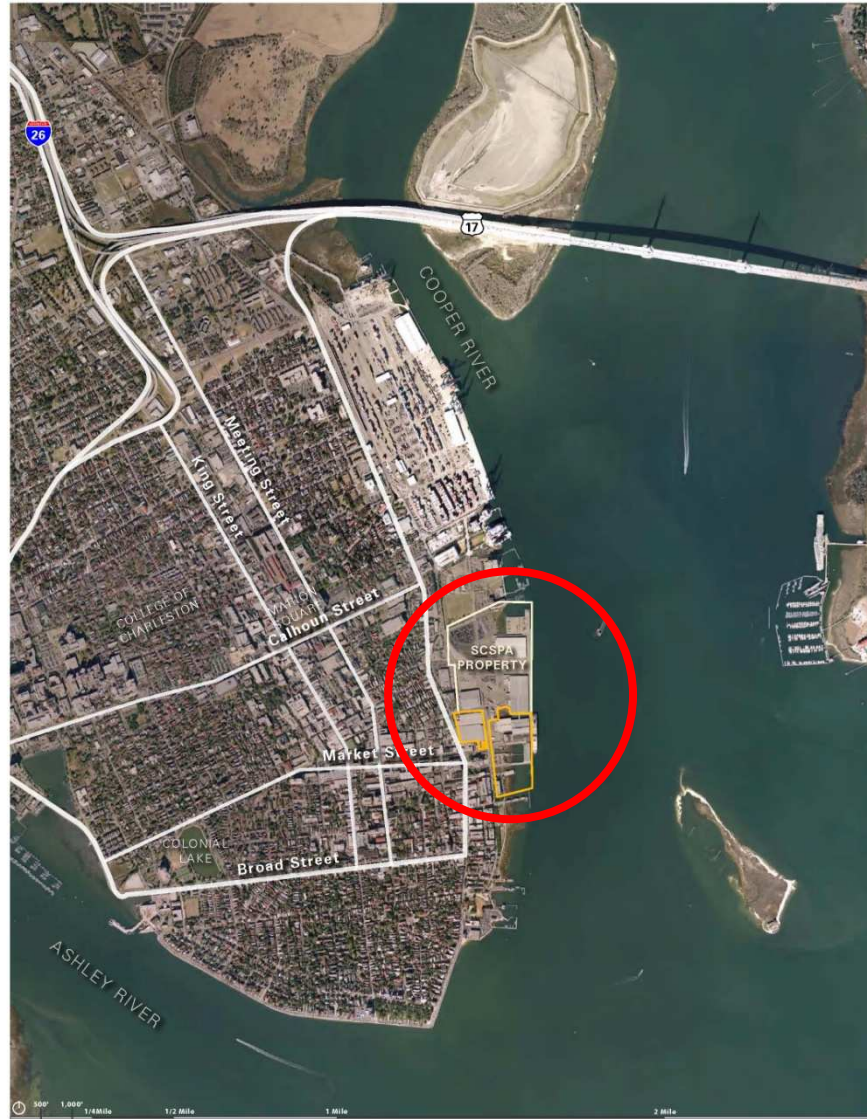
# Challenges

- Traffic Management
  - Signage
  - Re-Routed Traffic
  - Communications
- Size and Scale
  - One Berth, One Ship
  - Appropriate Size
- Environment
  - Strict Environmental Standards
  - [www.CruiseIndustryFacts.com](http://www.CruiseIndustryFacts.com)



# Next Steps

- Continuous Improvement
  - Operations & Communications
  - Cruise Neighbors Advisory Council
- Terminal Relocation



**PORTCHARLESTON**

A presentation of the South Carolina State Ports Authority



# PORT CHARLESTON

A presentation of the South Carolina State Ports Authority



# Relocation Benefits

- Cargo Operations
  - 200 Cargo Ships a Year
  - Daily Rail Activity
  - 1,800 Trucks/Cars a Week
- Less Traffic
  - Better Management on Cruise Days
  - Ends Washington St. Closure
- Unlocks Southern End for Non-Maritime



# Activity on Union Pier

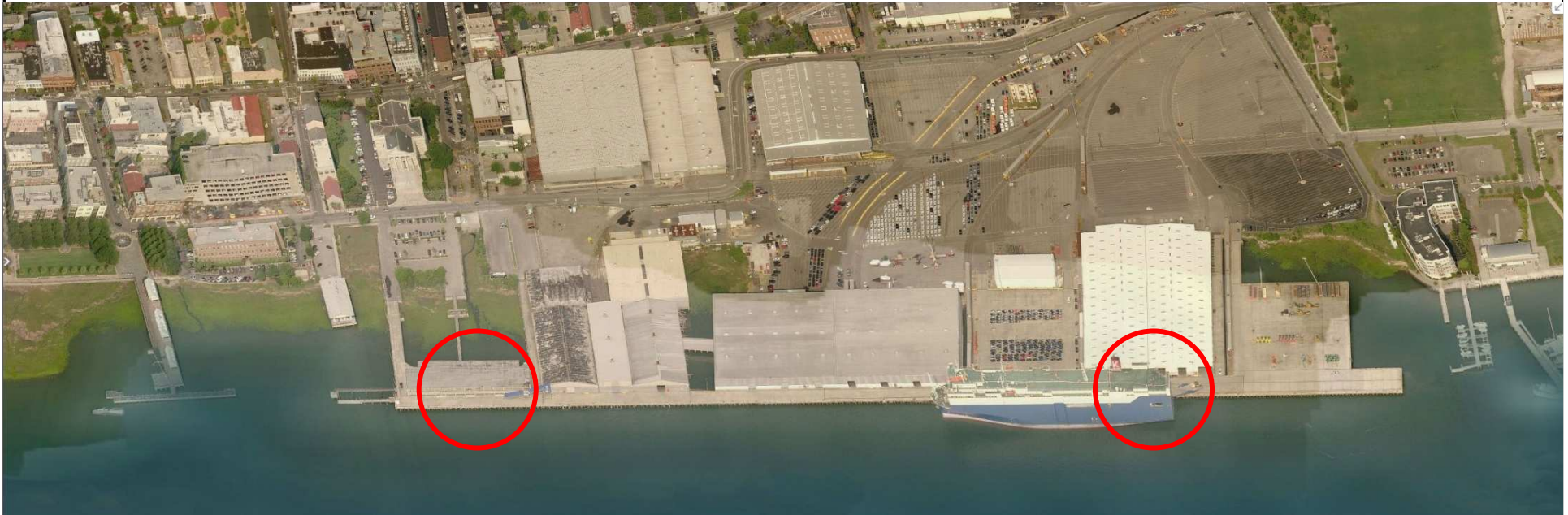
## Current Situation

- Cruise Terminal Remains at Existing Location
  - Average of ~2 ships/week (~67 in 2010, ~94 in 2011)
- Cargo Operations
  - 200 cargo ships a year
  - 1,800 trucks/cars a week
  - 3+ rail switches daily

## Proposed

- More Appropriate Cruise Terminal that Works & Fits
  - Average of ~2 ships/week (~67 in 2010, ~94 in 2011)

*Plus access to waterfront, public uses and non-maritime redevelopment of remaining property (~35 acres).*



**PORTCHARLESTON**

A presentation of the South Carolina State Ports Authority









# Future Opportunities

- Waterside End of Market Street
- Historic Custom House Wharf
- Preserved Bennett Rice Mill
- Natural Shoreline
- New View Corridors
- Public Access and Open Spaces



# Timeline

- Q4 2010: Solicit Proposals for Design
- Q1 2011: Begin Design
- Q3 2011: Complete Design
- Q4 2011: Begin Construction
- Q3 2012: Open New Terminal
- Master Plan Non-Maritime Properties



**UnionPierPlan.com**

**PORTCHARLESTON**

A presentation of the South Carolina State Ports Authority



# Report to the Community

---

## Cruise Industry

September 2, 2010

**PORTCHARLESTON**

A presentation of the South Carolina State Ports Authority