



# Design Kickoff Meeting

---

## Union Pier Cruise Terminal

May 10, 2011





# Mission

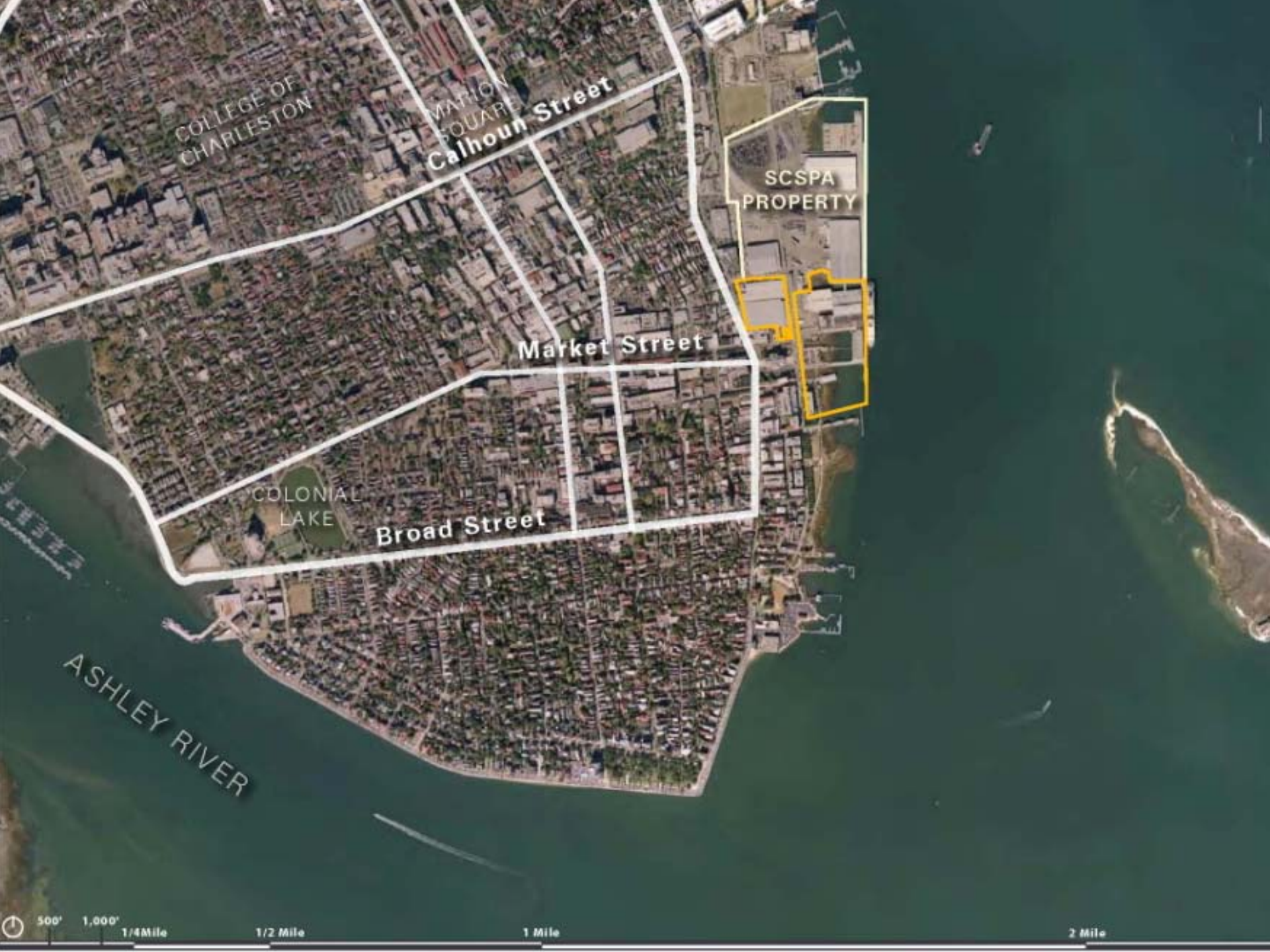
To promote, develop and facilitate waterborne commerce for the economic benefit of the citizens and businesses of South Carolina.



# Port Operations Statewide: **\$12 Billion in Wages**



# 2010 Cruise Economic Benefits: **\$37 Million + 400 jobs**



COLLEGE OF CHARLESTON

MARION SQUARE  
Calhoun Street

SCSPA PROPERTY

Market Street

COLONIAL LAKE

Broad Street

ASHLEY RIVER

500' 1,000' 1/4 Mile 1/2 Mile 1 Mile 2 Mile







# Opportunities

- Relocate Passenger Terminal
- Jobs, Economic Vitality
- Shift 180+ Cargo Ships
- Reduce Rail Traffic, Remove Tracks
- Improve Traffic Circulation In and Around Terminal
- Extend Market Street, Restore Custom House Wharf
- Recapture Natural Shoreline
- Place Bennett Rice Mill in Park
- Create Public Access to the Waterfront
- Provide Green Spaces, View Corridors





# Cruise Terminal Design

Doug Sethness, CH2M Hill







# Mandatory Plan Elements

## Vessel Considerations

- Wharf
- Passenger Loading Bridge
- Linking Terminal & Ship
- Security Considerations

## Outside

- Passenger Arrival/Departure
- On-Site Parking
- Wayfinding/Orientation
- Ship's Stores
- Security Considerations

## Inside

- Passenger Screening
- Check-In Area
- Passenger Waiting Area
- Transition to Ship
- Wayfinding/Orientation
- Baggage Laydown
- Terminal Exit
- Amenities/Necessities
- Security Considerations



# Design Schedule & Actions

- Early May: Stakeholder Sessions
- Today: Kickoff Meeting – Public Input
- Late May: Stakeholder Sessions
- June: Stakeholder Sessions, Preliminary Design, Public Input
- Refine/Finalize/Present Design
- Prepare for Renovations



# Breakout Sessions

Thom Penney, LS3P





# Timeline

- May/June: Design Work
- Refine/Finalize/Present Design
- Prepare for Renovations
- Late 2011: Begin Construction
- Late 2012: Open New Terminal
- Master Plan Non-Maritime Properties



# Opportunities

- Relocate Passenger Terminal
- Jobs, Economic Vitality
- Shift 180+ Cargo Ships
- Reduce Rail Traffic, Remove Tracks
- Improve Traffic Circulation In and Around Terminal
- Extend Market Street, Restore Custom House Wharf
- Recapture Natural Shoreline
- Place Bennett Rice Mill in Park
- Create Public Access to the Waterfront
- Provide Green Spaces, View Corridors



# Design Kickoff Meeting

---

## Union Pier Cruise Terminal

[www.UnionPierPlan.com](http://www.UnionPierPlan.com)